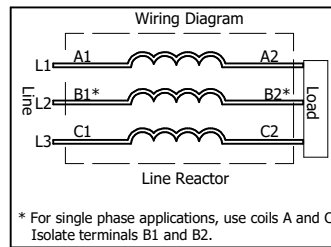
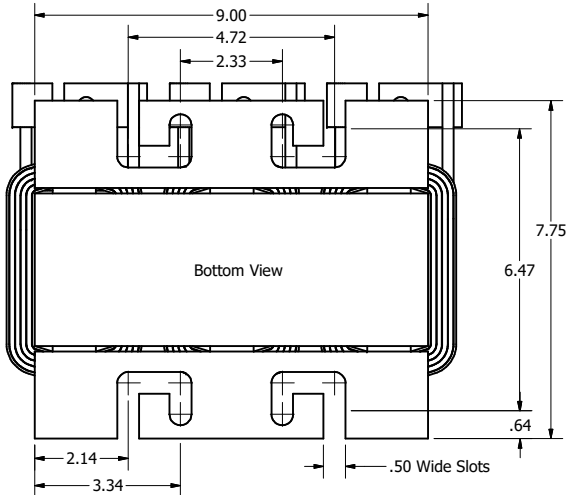
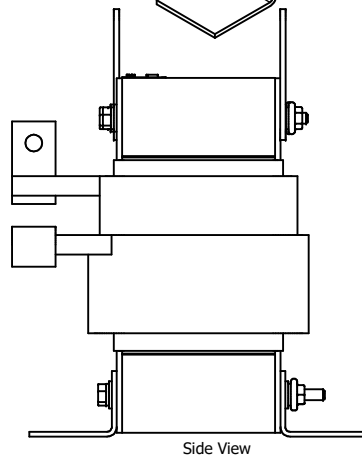
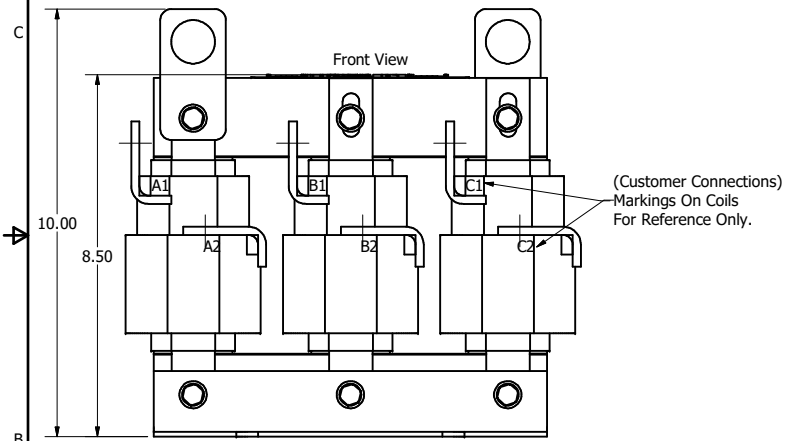


575 Rated Voltage, 600 Max Voltage, High Z, Impedance.								
Part Number	Horsepower (HP)	Motor Amps (A)	Maximum Amps (A)	Inductance (uH)	Weight (LBS)	Losses (W)	Available Lug Kit	Terminal Hole Size (Inches)
KDRJ41H	200	192	192	250	70	466	SLK11	0.38



**TCL** (800) 824-8282 transcoil.com

TCL, LLC  
Germanstown, WI, USA  
transcoil.com  
800-824-8282

KDRJL Drive Reactor  
KDR— Motor Amps —  
3PH, 50/60Hz, —V Rated, 600V Max, —A Max  
40C Amb Max, 155C Rise, RoHS  
Manual #30895 LUG KIT #SLK—

UL LISTED CE  
200 0000 10 2010

DATE CODE A1 A2 B1 B2 C1 C2

- Note:
1. UL file number: cULus Listed File E116124.
  2. KDR Drive Reactors Comply With The Thermal and Altitude Standards Set Forth by NEMA ST20-1992.
  3. For Terminal Torques And Wire Size See, KDR IOM Manual, Part Number 30895
  4. NEC Current For 208/240 Volts, Horsepower Based On 208 Volts.
  5. Material(s) Shall be RoHS Compliant
  6. Customer Is Responsible For Installation To Meet All National And Local Electrical Codes.

THE INFORMATION AND DESIGNS CONTAINED IN THIS DRAWING ARE CONFIDENTIAL AND THE PROPRIETARY PROPERTY OF ALLIED MOTION TECHNOLOGIES INC. AND ITS SUBSIDIARIES. NEITHER THIS DESIGN NOR ANY INFORMATION CONTAINED IN THIS DRAWING MAY BE REPRODUCED OR DISCLOSED TO OTHERS WITHOUT THE EXPRESS WRITTEN CONSENT OF ALLIED MOTION TECHNOLOGIES INC. AND ITS SUBSIDIARIES.

NO	REVISION	DATE	BY

TOLERANCES (EXCEPT AS NOTED)		TCL		W132N10611 (Rev 1) Feb 2022 Germanstown, WI 53022	
DECIMAL	.XX ± .25 .XXX ± .10	An Official Motors Company		© 2022 TCL, LLC	
FRACTIONAL	± 1/16				
ANGULAR	± 1°	DRN BY	DATE	2/28/18	107536DG
SCALE	1/2.2	DRWN	DATE		

Reactor Drawing  
SHT 3 OF 3